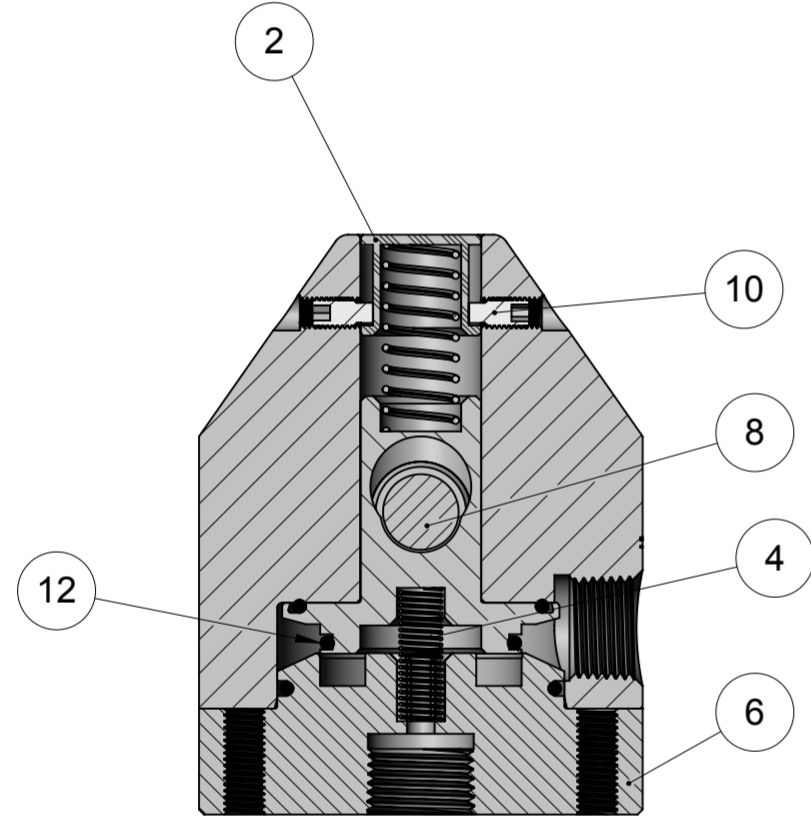


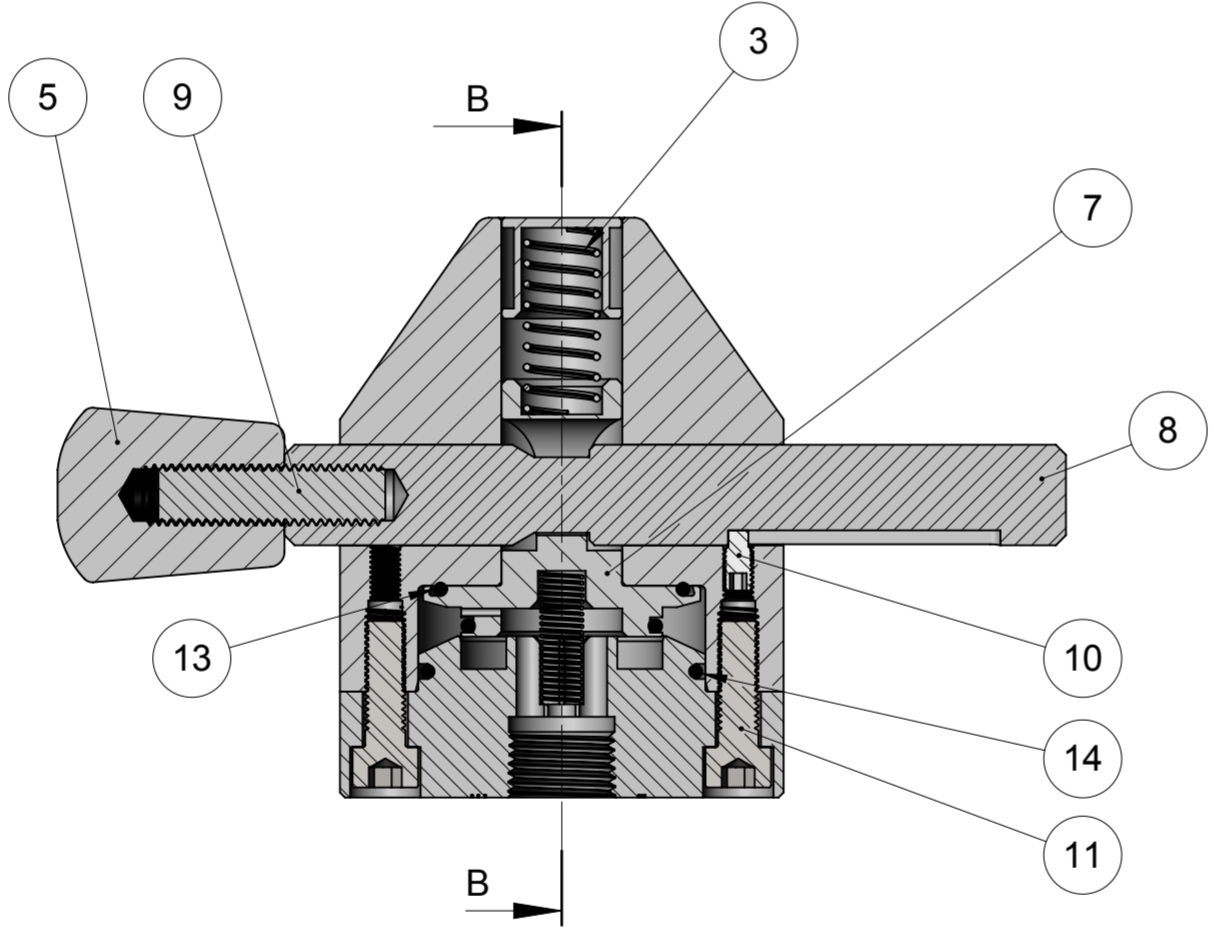
ITEM No.	PART No.	DESCRIPTION	QTY.	KIT
1	DC0300301	BODY, INTERLOCK	1	
2	DC0300305	BUTTON, RELEASE, INTERLOCK	1	
3	DC0300307	SPRING, COMPRESSION, INTERLOCK	1	
4	DC0300308	SPRING, COMPRESSION, INTERLOCK	1	
5	DC0300309	KNOB, PLASTIC, INTERLOCK	1	
6	DC0300311	BASE, INTERLOCK	1	
7	DC0300312	LOCKING/SEALING PIN, INTERLOCK	1	
8	DC0300320	BOLT, INTERLOCK, STD, 50MM STROKE, 155MM OAL	1	
9	FB155	STUDING, STAINLESS STEEL, M12 X 1.75 X 1 METRE	0.045	
10	FB156	SET SCREW, SKT, DOG POINT, M6 x 12 LG, 316SS	3	◀
11	FB236	SCREW, CAP, SCKT, M8X1.25X25LG, 316 SS	6	
12	E13494	O-RING	1	◀
13	RN970-65	O-RING	1	◀
14	RN0136-7	O-RING	1	◀
15	DC0300306	ASSEMBLY TOOL	1	
16	SM034	GREASE, CHRISTO-LUBE MCG-111, 2.OZ TUBE	1	

SERVICE KIT P/N: DC0300202

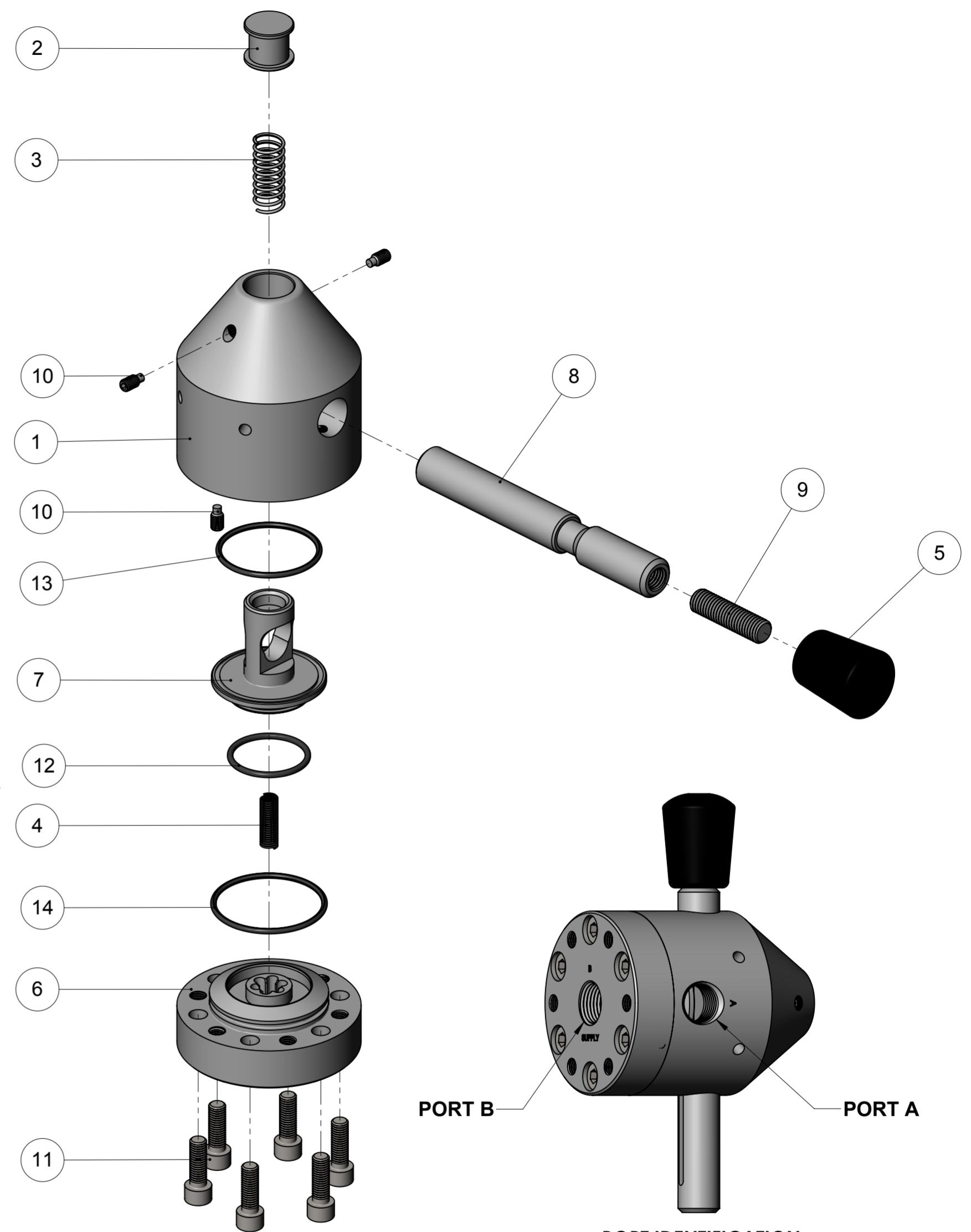
ITEM 15  
ASSEMBLY TOOL



SECTION B-B  
SCALE 1 : 1.5



SECTION A-A  
SCALE 1 : 1.5



PORT B PORT A

PORT IDENTIFICATION

DIVEX OWNS THE COPYRIGHT OF THIS DOCUMENT AND ANY DESIGN RIGHT HEREIN. IT IS SUPPLIED IN CONFIDENCE AND MUST NOT BE USED FOR ANY PURPOSE OTHER THAN THAT FOR WHICH IT IS SUPPLIED AND MUST NOT BE REPRODUCED WITHOUT PERMISSION IN WRITING FROM THE OWNERS.

**NOTES**

- UNIT IS HANDED BY LOCATION OF PORT 'A'
- SECURE DOG POINT SOCKET SET SCREWS (ITEM 10) WITH LOCTITE 603.
- USE ASSEMBLY TOOL (ITEM 15) TO LOCATE COMPRESSION SPRING (ITEM 4) WHEN FITTING BASE (ITEM 6) TO BODY (ITEM 1).
- TIGHTEN SOCKET HEAD CAP SCREWS (ITEM 11) TO A TORQUE SETTING OF 13.6Nm (10ft lbs)

WORKING PRESSURE: 45 BAR  
TEST PRESSURE: 68 BAR  
DESIGN TEMPERATURE: -20°C +50°C  
DESIGN CODE PD5000:2006 CONSTRUCTION CATEGORY 3

Denotes Changes Made At This Revision

ALL DIMENSIONS SHOWN ARE IN MM (UOS)  
ALL DIMENSIONS BEFORE PLATING (UOS)  
REMOVE ALL SHARP EDGES AND BURRS

DIMENSIONAL TOLERANCES		MACHINING		FABRICATION	
NO DECIMAL PLACES	±1.0	SIZE >0 <100	±0.5	SIZE >0 <100	±0.5
ONE DECIMAL PLACE	±0.2	SIZE >100 <500	±1.5	SIZE >100 <500	±1.5
TWO DECIMAL PLACE	±0.05	SIZE >500	±3.0	SIZE >500	±3.0
ANGULAR TOLERANCE	±0.5°	ANGULAR TOLERANCE	±0.5°	ANGULAR TOLERANCE	±0.5°

MATERIAL	REFER TO PARTS LIST
FINISH	N/A
THIRD ANGLE PROJECTION	

REV	DESCRIPTION	ECN No	BY	DATE	AUTH BY
R06					
R05					
R04					
R03					
R02	REPLACED O-RING RN126-7 WITH E13494	14921	SB	29/08/2012	MS
R01	ADD DESIGN CRITERIA TO DRAWING	13063	LJS	27/11/2009	RTW
R00	ISSUED FOR MANUFACTURE		GR	19/03/2007	RTW

**DO NOT SCALE DRAWING**

TITLE <b>INTERLOCK, STANDARD, MEDICAL/ EQUIP/ TRANSER LOCK</b>	
DRAWING No. <b>P211313S1</b>	REV <b>R02</b>
PART No. <b>DC0300AA</b>	PRODUCT / PROJECT No. <b>INTERLOCK</b>
SIZE <b>A2</b>	SCALE <b>1:2 (UOS)</b>
SHT <b>1</b>	OF <b>1</b>

DIVEX LIMITED  
ENTERPRISE DRIVE  
WESTHILL  
ABERDEEN  
AB32 6TQ  
UNITED KINGDOM

Tel : +44(0)1224 740145  
Fax : +44(0)1224 740172  
email : info@divexglobal.com  
www.divexglobal.com